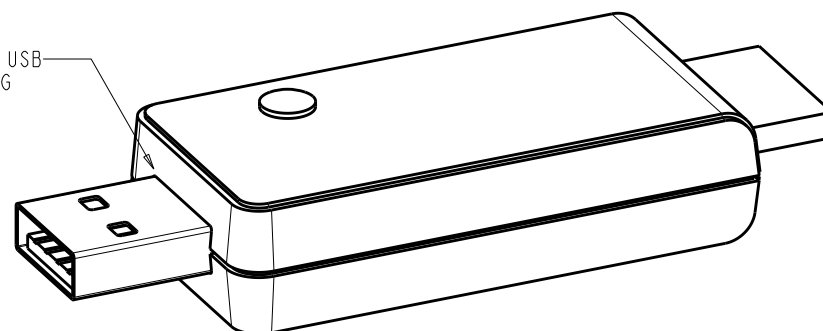
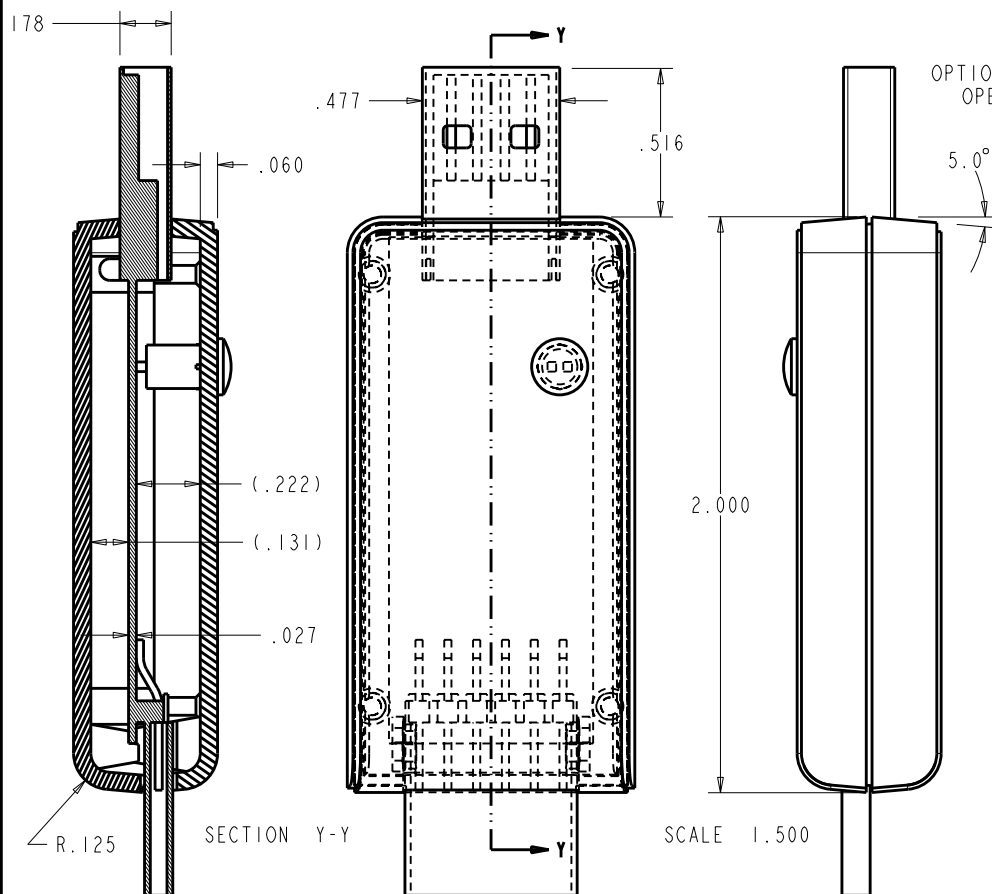


R E V I S I O N					
REV.	DRAWN BY	ECO No	DESCRIPTION	DATE	APPROVED
A	M BOYER	DRI059	PRELIMINARY RELEASE	24-Aug-09	D.C.
B	M BOYER	N/A	ADJSUT CUTOUPS PER CUSTOMER	31-Aug-09	D.C.
C	M BOYER	N/A	ADD NOTE REGARDING LITE-PIPE INSTALLATION	02-Sep-09	D.C.
I	M BOYER	N/A	RELEASED PER EMAIL FROM E BRIONES	09-Sep-09	D.C.



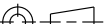
#### NOTES: UNLESS OTHERWISE SPECIFIED

- CORNERS DRAWN SHARP TO BE R.005 MAXIMUM.
- EXTERIOR SURFACE TEXTURE TO BE LIGHT EDM FINISH. EQUIVELANT TO MT-11010.
- INTERIOR SURFACE TEXTURE: NONE
- ALL INSIDE RADII .010R. ALL OUTSIDE RADII .020R MAX, UNLESS OTHERWISE SPECIFIED.
- ALL EXTERNAL DIMENSIONS AFFECTED BY THE DRAFT APPLY AT THE LARGE END OF THE FEATURE, AND ALL INTERNAL FEATURES AFFECTED BY THE DRAFT APPLY AT THE SMALL END OF THE FEATURE UNLESS OTHERWISE SPECIFIED.
- 1 DEGREES DRAFT IN THE DIRECTION OF PULL IS PERMISSIBLE UNLESS OTHERWISE SPECIFIED.
- THIS ENCLOSURE IS A PRESS FIT ASSEMBLY. FOR PERMANENT CLOSURE: A DROP ADHESIVE OR ULTRASONIC WELDING IS REQUIRED.
- MATERIAL / COLOR: ABS PLASTIC IS STANDARD IN BLACK OR WHITE. CUSTOM MATERIALS AND COLORS ARE AVAILABLE UPON REQUEST.
- PCB SIZES ARE RECOMMENDATIONS ONLY. FINAL SIZES AND VERIFICATION OF IT'S FIT ARE THE SOLE RESPONSIBILITY OF EACH O.E.M.

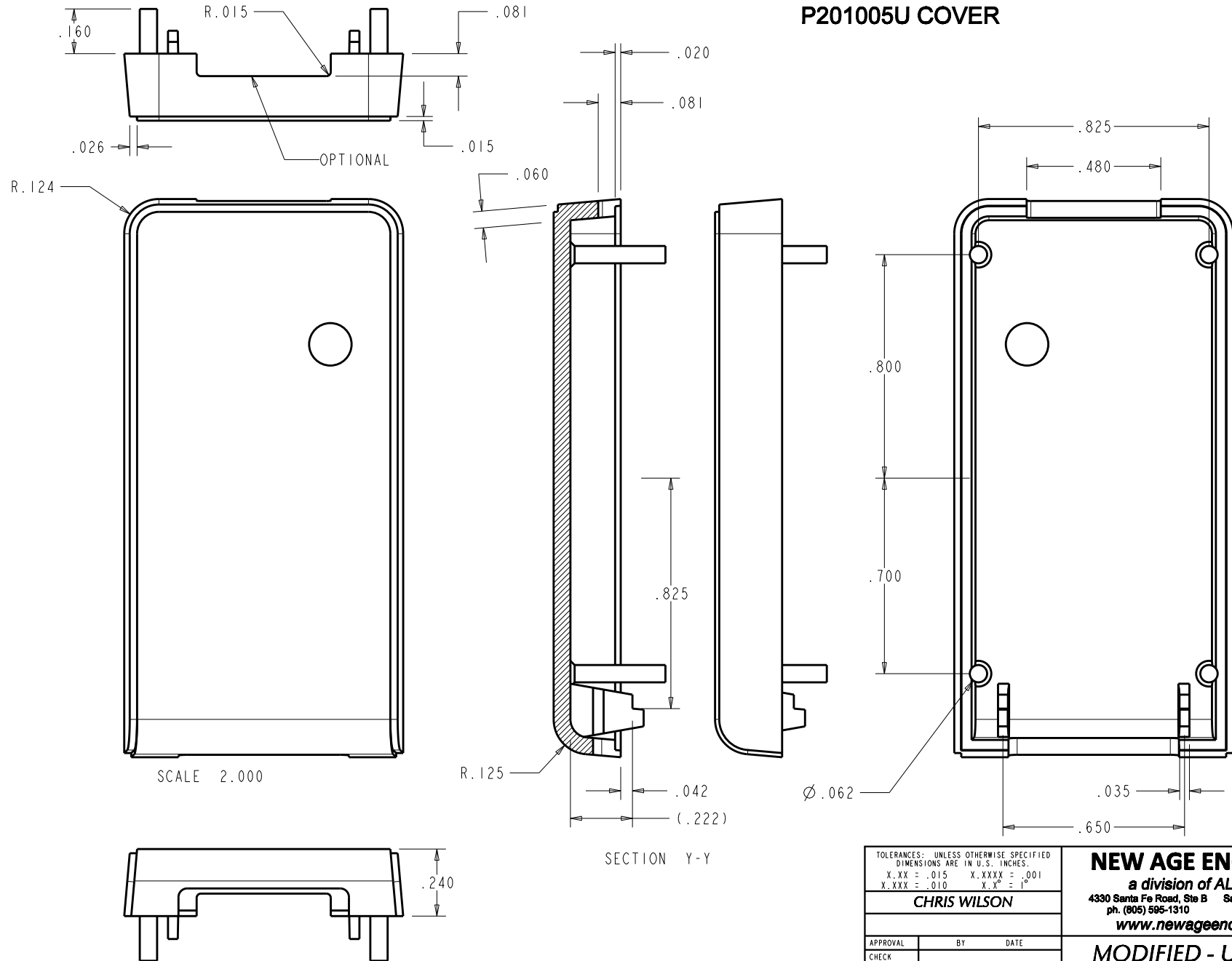
#### P201005 (X) CONFIGURATIONS:

U = USB OPENING INCLUDED  
BLANK = NO USB OPENING

ITEM	FILE NAME	DESCRIPTION	MATERIAL	COLOR	QTY.
4	201005_LITE-PIPE	201005 LIGHT PIPE - MODIFIED	CUSTOMER SUPPLIED	CLEAR	1
3	NAP201005_COVER	P3A-201005U COVER - MODIFIED	ABS	BLACK	1
2	NAP201005_BASE	P3A-201005U BASE - MODIFIED	ABS	BLACK	1
1	NAP201005_PCB	REFERENCE ONLY	CUSTOMER SUPPLIED	.027" THICK	1
BILL OF MATERIALS					

THIRD ANGLE PROJECTION		TOLERANCES: UNLESS OTHERWISE SPECIFIED DIMENSIONS ARE IN U.S. INCHES: X.XX ± .015    X.XXXX ± .001 X.XXX ± .010    X.X° ± 1°		<b>NEW AGE ENCLOSURES</b>  <i>a division of ALLTEC Mfg.</i> 4330 Santa Fe Road, Ste B    San Luis Obispo, CA. 93401 ph. (805) 595-1310    fax (805) 595-1024 <a href="http://www.newageenclosures.com">www.newageenclosures.com</a>	
		<b>CHRIS WILSON</b>			
DO NOT SCALE DRAWING		<i>Customer Part No: XXX</i>			
NOTICE: THE INFORMATION AND DATA CONTAINED HEREIN IS CONSIDERED PROPRIETARY TO ALLTEC INTEGRATED MFG INC & SHALL REMAIN THE EXCLUSIVE PROPERTY OF ALLTEC INTEGRATED MFG INC. THE HOLDER WILL ASSUME CUSTODY AND CONTROL THAT THIS DOCUMENT WILL NOT BE COPIED, REPRODUCED, OR DISCLOSED WITHOUT THE EXPRESS WRITTEN CONSENT OF ALLTEC INTEGRATED MFG INC. POSSESSION OF THIS DOCUMENT DOES NOT CONSTITUTE A GRANT TO MANUFACTURE ANY ITEMS. © 2008		APPROVAL    BY    DATE			
		CHECK		<b>MODIFIED - USB DEVICE</b> <b>P3A-201005U-CHR29050</b>	
		ENG.			
		SCALE			
DRAWN BY <b>M BOYER    24-Aug-09</b>		SIZE <b>A</b>		DRAWING NAME <b>P3A-201005U_CHR29050_R1</b>	
				SHEET <b>1 OF 5</b>	
				REV	

# P201005U COVER



TOLERANCES: UNLESS OTHERWISE SPECIFIED  
DIMENSIONS ARE IN U.S. INCHES.  
X.XX = .015 X.XXXX = .001  
X.XXX = .010 X.X" = 1"

CHRIS WILSON

APPROVAL	BY	DATE
CHECK		
ENG.		
SCALE		

DRAWN BY  
**M BOYER** 24-Aug-09

**NEW AGE ENCLOSURES**

a division of ALLTEC Mfg.  
4330 Santa Fe Road, Ste B San Luis Obispo, CA. 93401  
ph. (805) 595-1310 fax (805) 595-1024  
[www.newageenclosures.com](http://www.newageenclosures.com)

**MODIFIED - USB DEVICE**  
**P3A-201005U-CHR29050**

SIZE **A** DRAWING NAME  
P3A-201005U\_CHR29050\_R1

SHEET **2 OF 5** REV **1**

NO DRAFT

(.081)

.121

R.015

.998

1.998

SCALE 2.000

.280

.040

.260

.826

.089

R.125

SECTION S-S

(.700)

.480

Ø.125

Ø.061

.800

.700

.825

.035

.560

(1.375)

P201005U BASE

TOLERANCES: UNLESS OTHERWISE SPECIFIED  
DIMENSIONS ARE IN U.S. INCHES.  
X.XX ± .015 X.XXXX ± .001  
X.XXX ± .010 X.X° ± 1°

CHRIS WILSON

APPROVAL BY DATE

CHECK

ENG.

SCALE

DRAWN BY M BOYER 24-Aug-09

SIZE A

DRAWING NAME P3A-201005U\_CHR29050\_R1

SHEET 3 OF 5

REV 1

NEW AGE ENCLOSURES  
a division of ALLTEC Mfg.  
4330 Santa Fe Road, Ste B San Luis Obispo, CA 93401  
ph. (805) 595-1310 fax (805) 595-1024  
www.newageenclosures.com

MODIFIED - USB DEVICE  
P3A-201005U-CHR29050

$$\begin{array}{ll} X.XX = .015 & X.XXXX = .001 \\ X.XXX = .010 & X.X^{\circ} = 1^{\circ} \end{array}$$

APPROVAL	BY	DATE
CHECK		
ENG.		
SCALE		

4330 Santa Fe Road, Ste B San Luis Obispo, CA. 93401  
ph. (805) 595-1310 fax (805) 595-1024

ph. (805) 595-1310 fax (805) 595-1024  
www.newageenclosures.com

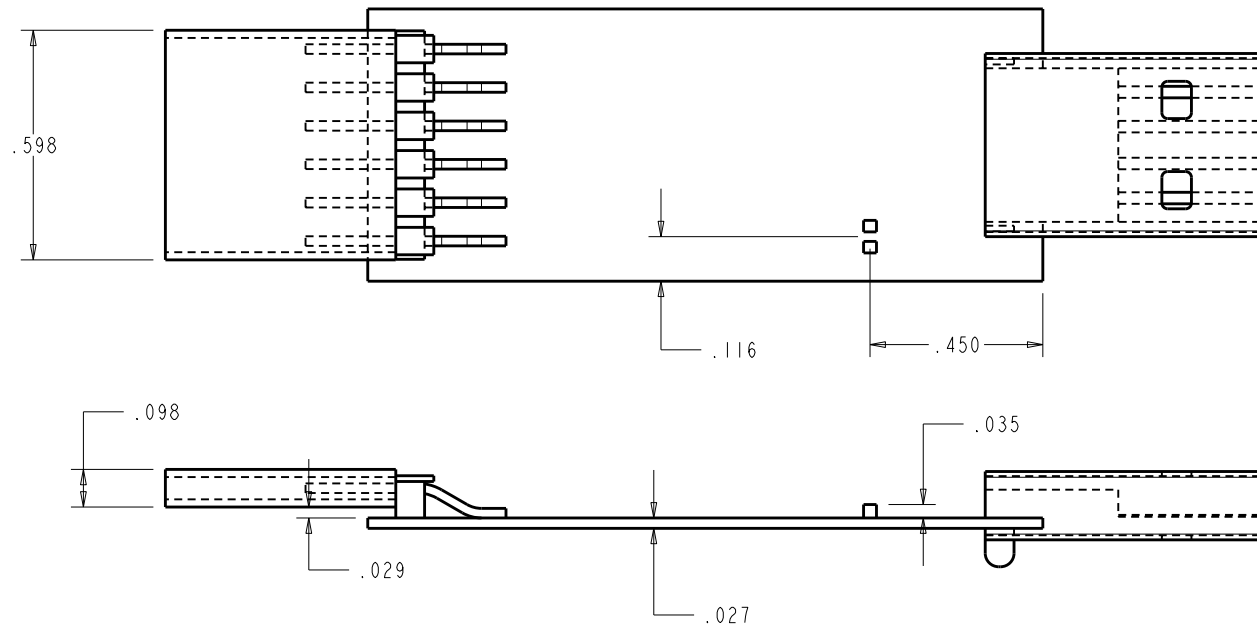
**MODIFIED - USB DEVICE**  
**P3A-201005U-CHR29050**

SIZE <b>A</b>	DRAWING NAME <b>P3A-201005U_CHR29050_R1</b>
------------------	--

SHEET <b>3 OF 5</b>	REV <b>1</b>
------------------------	-----------------

# P201005 PCB - CUSTOMER SUPPLIED

PCB SIZES ARE RECOMMENDATIONS ONLY. FINAL SIZES AND VERIFICATION OF IT'S FIT ARE THE SOLE RESPONSIBILITY OF THE OEM.



\*\* = RECOMMENDED BOARD THICKNESS IS 0.027" THICK, BUT INSERTS ARE AVAILABLE TO ALLOW OTHER THICKNESSES. ASK YOUR SALES REP FOR DETAILS.

TOLERANCES: UNLESS OTHERWISE SPECIFIED  
DIMENSIONS ARE IN U.S. INCHES.  
X.XX = .015 X.XXXX = .001  
X.XXX = .010 X.X° = 1°

CHRIS WILSON

APPROVAL	BY	DATE
CHECK		
ENG.		
SCALE		

DRAWN BY  
M BOYER 24-Aug-09

## NEW AGE ENCLOSURES

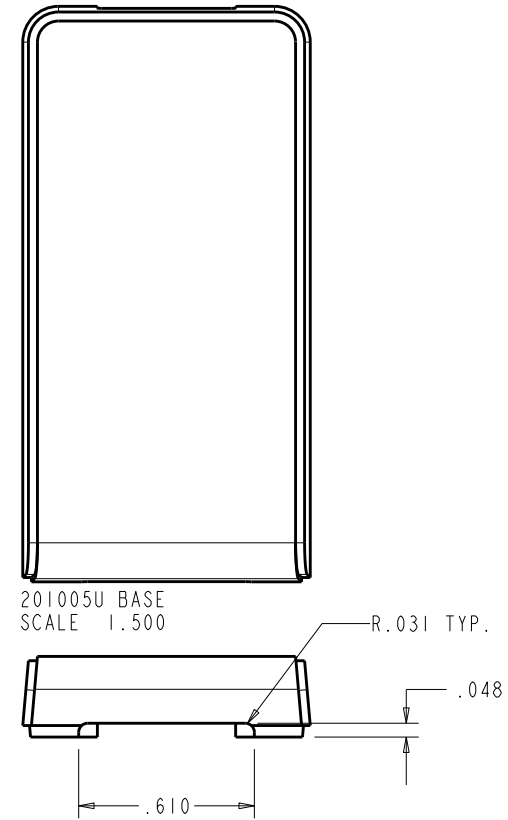
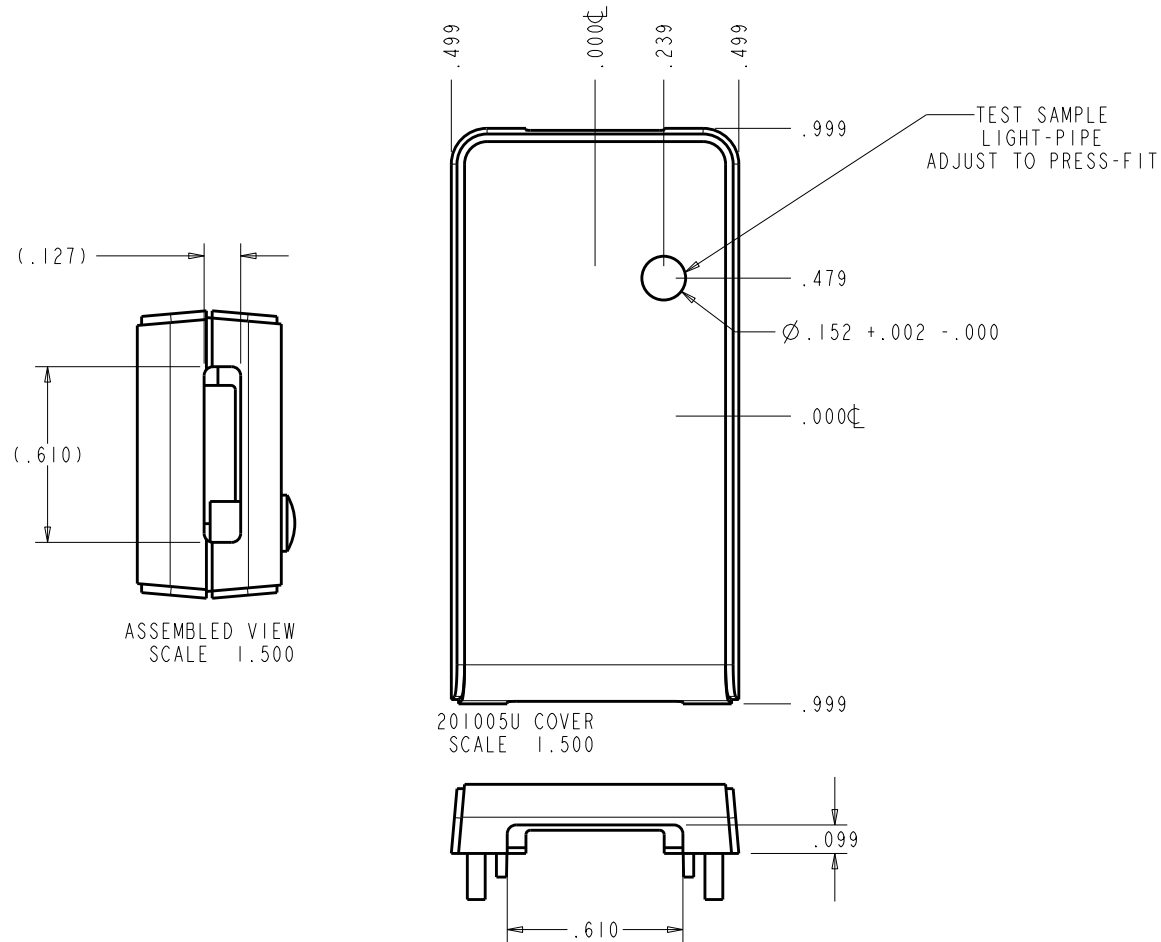
a division of ALLTEC Mfg.  
4330 Santa Fe Road, Ste B San Luis Obispo, CA. 93401  
ph. (805) 585-1310 fax (805) 585-1024  
[www.newageenclosures.com](http://www.newageenclosures.com)

MODIFIED - USB DEVICE  
P3A-201005U-CHR29050

SIZE A	DRAWING NAME P3A-201005U_CHR29050_R1	SHEET 4 OF 5	REV 1
-----------	---	-----------------	----------

## 2nd OPERATION DETAILS

NEW AGE ENCLOSURES DELIVERS YOUR ENCLOSURE MARKET-READY WITH IN-HOUSE  
CNC MACHINING, PAD PRINTING, ASSEMBLY, AND FULFILLMENT.  
ALL SURFACES AND AREAS ARE AVAILABLE FOR CNC ALTERATION BY NEW AGE ENCLOSURES  
CALL (805) 595-1310 FOR PRICING AND SCHEDULE.  
THE INSIDE RADIUS OF ANY MACHINED FEATURES SHOULD BE NO SMALLER THAN .031"



### P3A-201005U-CHR29050 COVER - ABS, BLACK

STEP NO	DESCRIPTION	CUTTER	FIXTURE	ORIENTATION	PROGRAM
1	END CABLE PLUG HOLE	T2 = .062" EM	103	DOUBLE ENDS	
2	PIPE HOLE ON FACE	T2 = .062" EM	103	SINGLE	

### P3A-201005U-CHR29050 BASE - ABS, BLACK

STEP NO	DESCRIPTION	CUTTER	FIXTURE	ORIENTATION	PROGRAM
3	END CABLE PLUG HOLE	T2 = .062" EM	103	DOUBLE ENDS	

TOLERANCES: UNLESS OTHERWISE SPECIFIED  
DIMENSIONS ARE IN U.S. INCHES.  
X.XX = .015 X.XXXX = .001  
X.XXX = .010 X.X° = 1°

CHRIS WILSON

APPROVAL BY DATE  
CHECK  
ENG.  
SCALE  
DRAWN BY  
M BOYER 24-Aug-09

### NEW AGE ENCLOSURES

a division of ALLTEC Inc.  
4330 Santa Fe Road, Ste B San Luis Obispo, CA. 93401  
ph. (805) 595-1310 fax (805) 595-1024  
www.newageenclosures.com

### MODIFIED - USB DEVICE P3A-201005U-CHR29050

SIZE A DRAWING NAME P3A-201005U\_CHR29050\_R1 SHEET 5 OF 5 REV 1